

Music Writing Basics

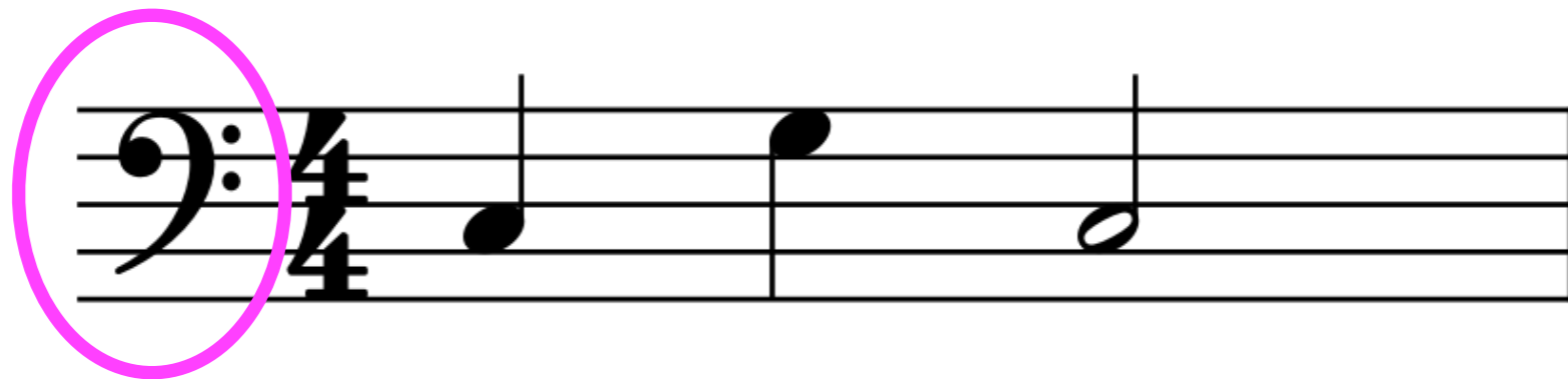
Clefs



These signs are called **clefs**



We see them on the staff at the beginning of the music.



Clefs are very important signs because they tell us what notes belong on the staff, and where they fit.



This is the **treble clef**. It tells us that the notes on this staff are the higher sounding notes.



Music for instruments like the violin, the flute, the guitar, and the high notes on the piano are written using the treble clef.



The **bass clef** tells us that the notes on that staff are
the lower-sounding notes,



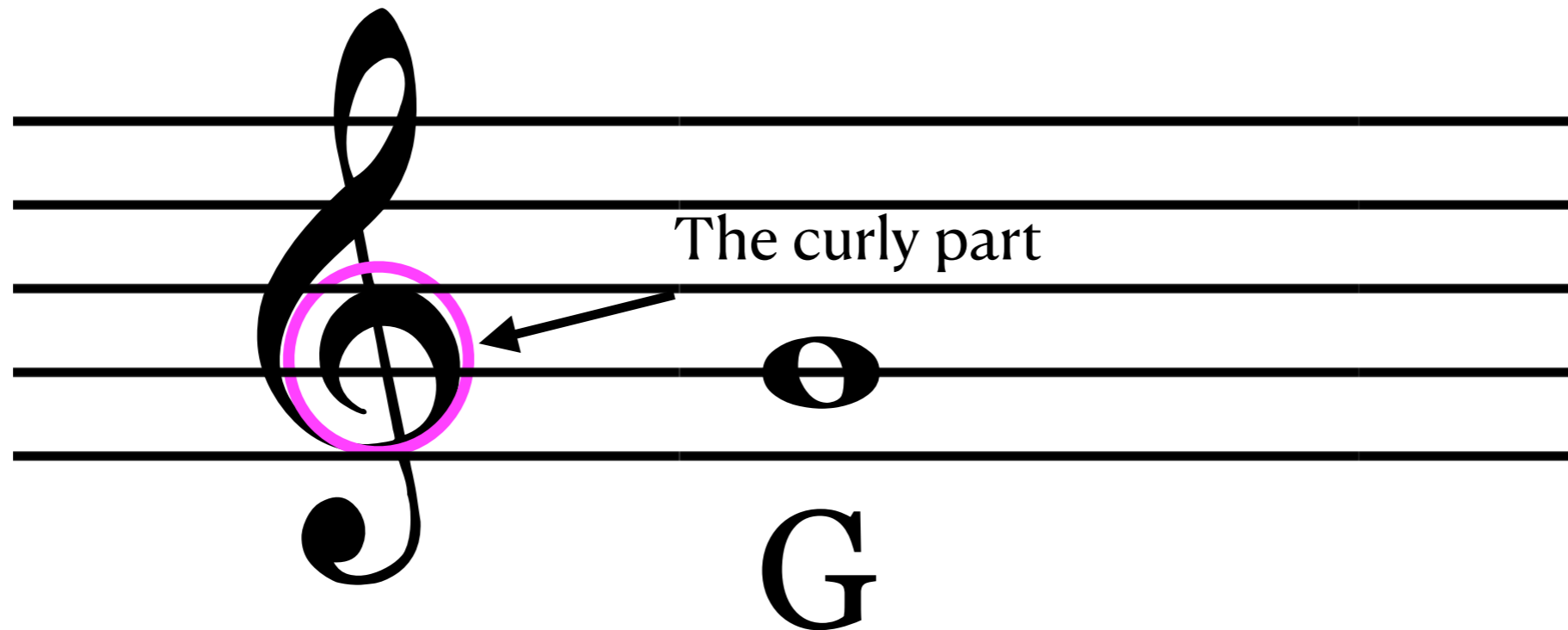
Music for instruments like the bass, the bassoon, the 'cello, and the low notes on the piano are written using the bass clef.



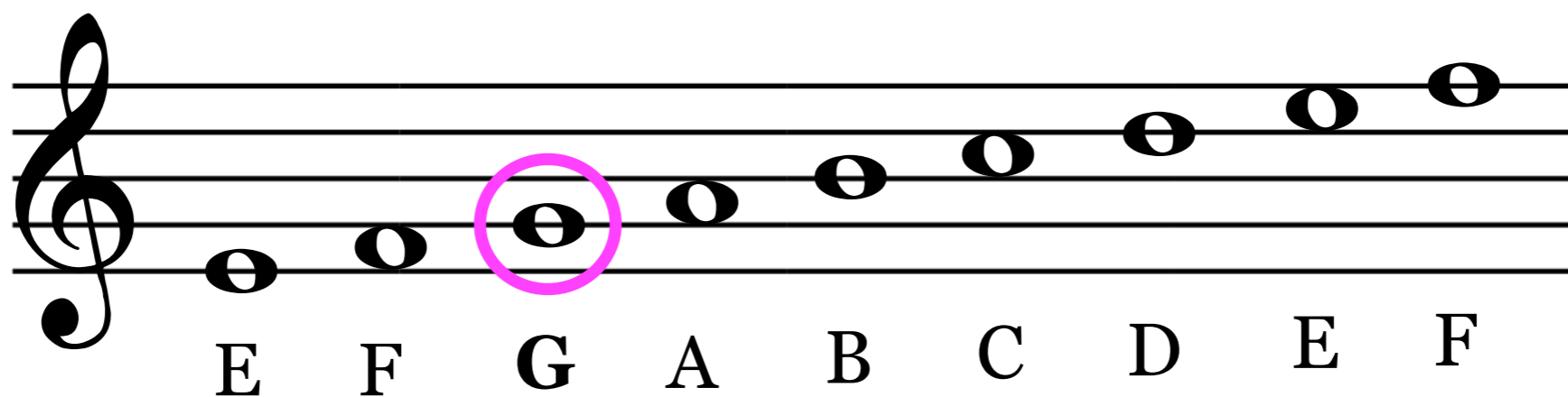
There's one other very important thing that clefs do.



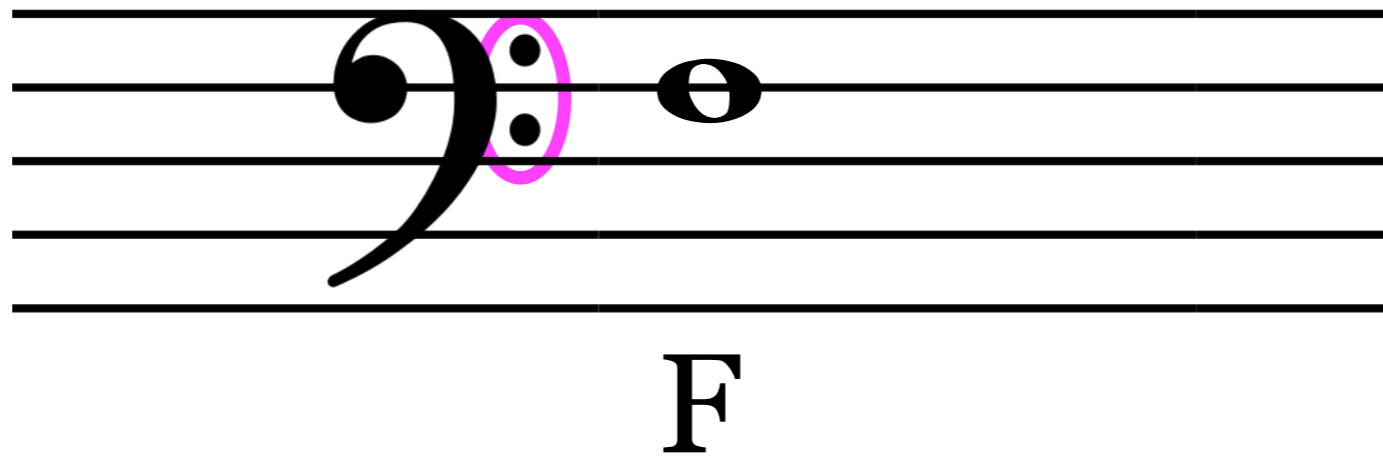
The **treble clef** is also called the **G clef**, because the curly part of the clef shows where the note G goes.



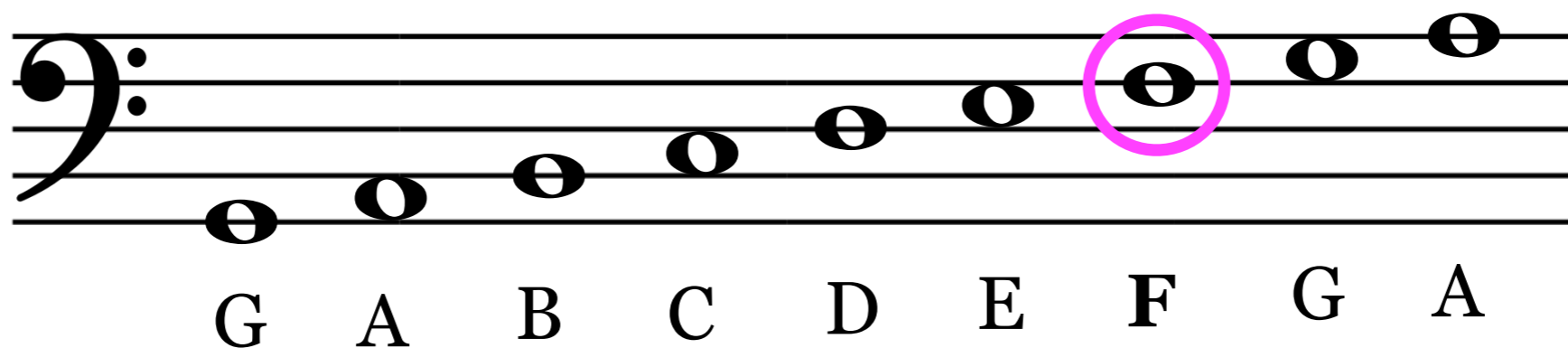
Once you know that, you know where all the other notes go on the treble staff!



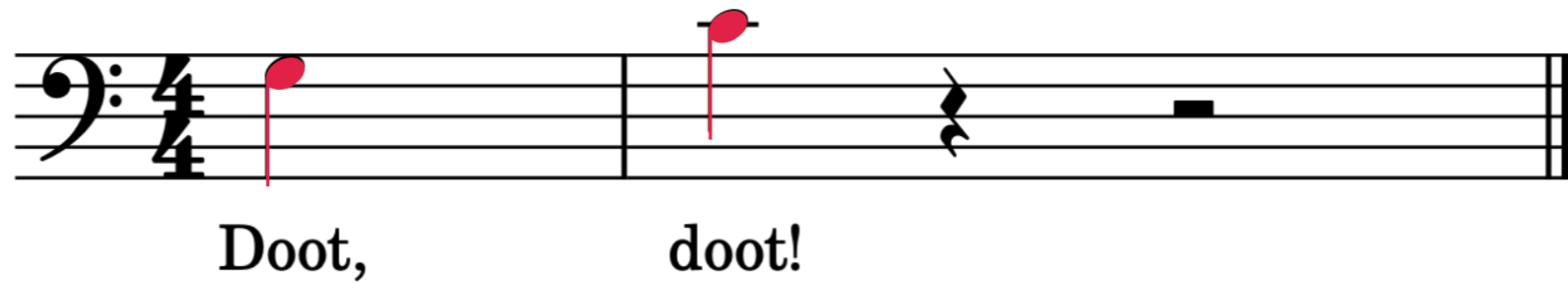
The **Bass clef** is also called the **F clef**, because the two dots show where the note F goes.



And once you know that, you know where all the other notes go on the bass staff!



Yay!



Try another Tiny Music Lesson!