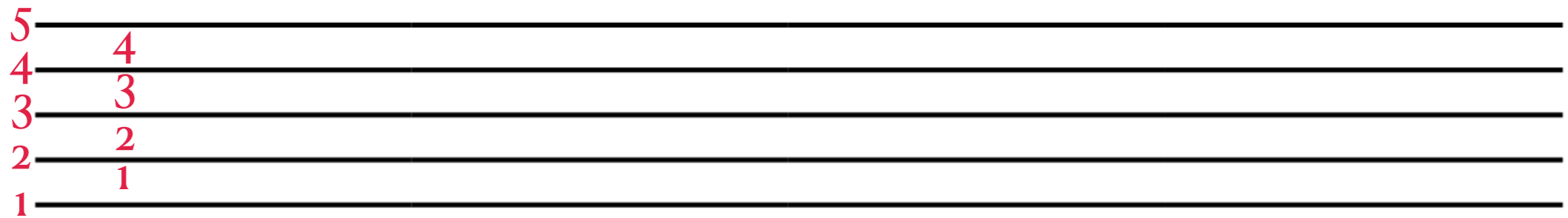


Music Writing Basics

Staff Lines and Where Notes Go

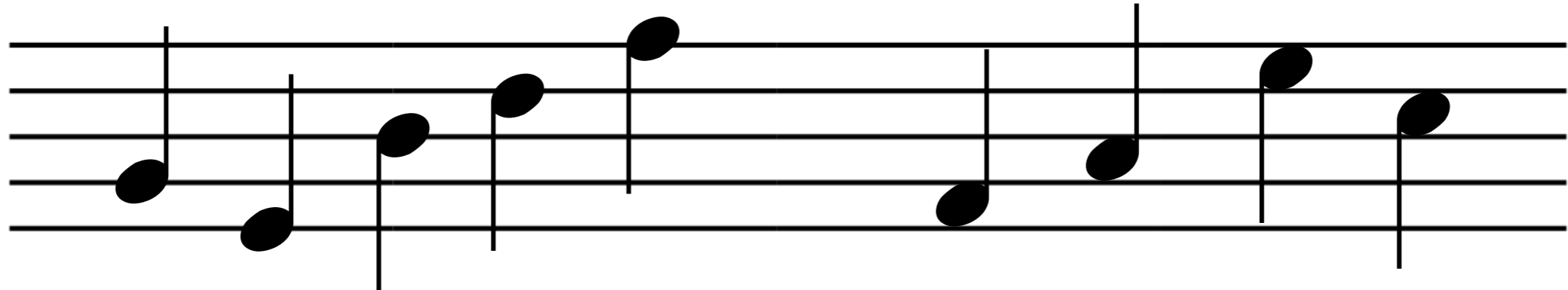


We write music by putting notes on
a staff of five lines
(and four spaces).

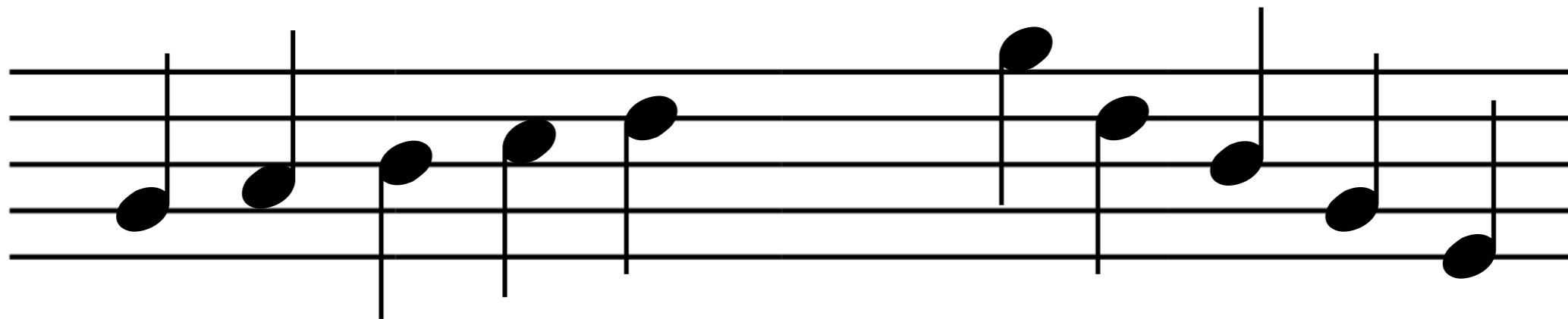


(We count from the bottom up.)

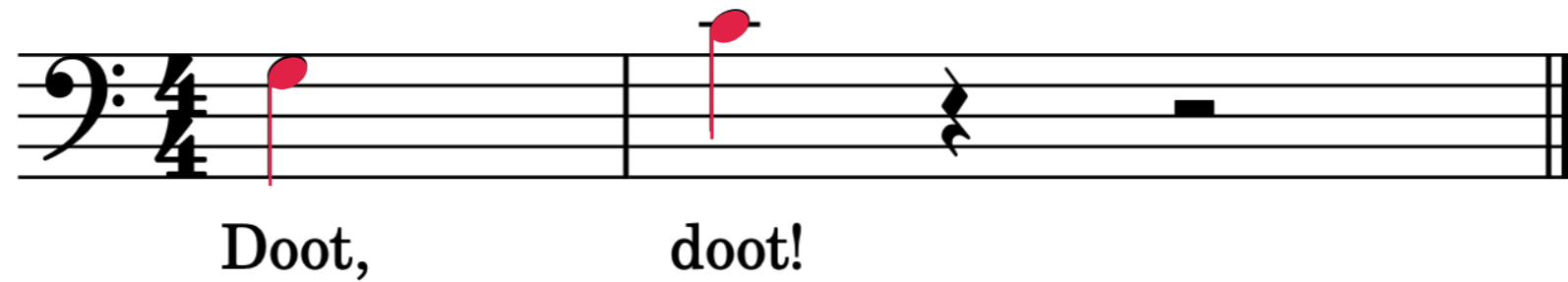
We write notes on the lines and in the spaces.



Notes that are higher up on the staff sound higher. We say, they have a higher *pitch*. Notes in a lower position on the staff have a lower pitch. (You've probably figured this out already.)



Yay!



Try another Tiny Music Lesson!